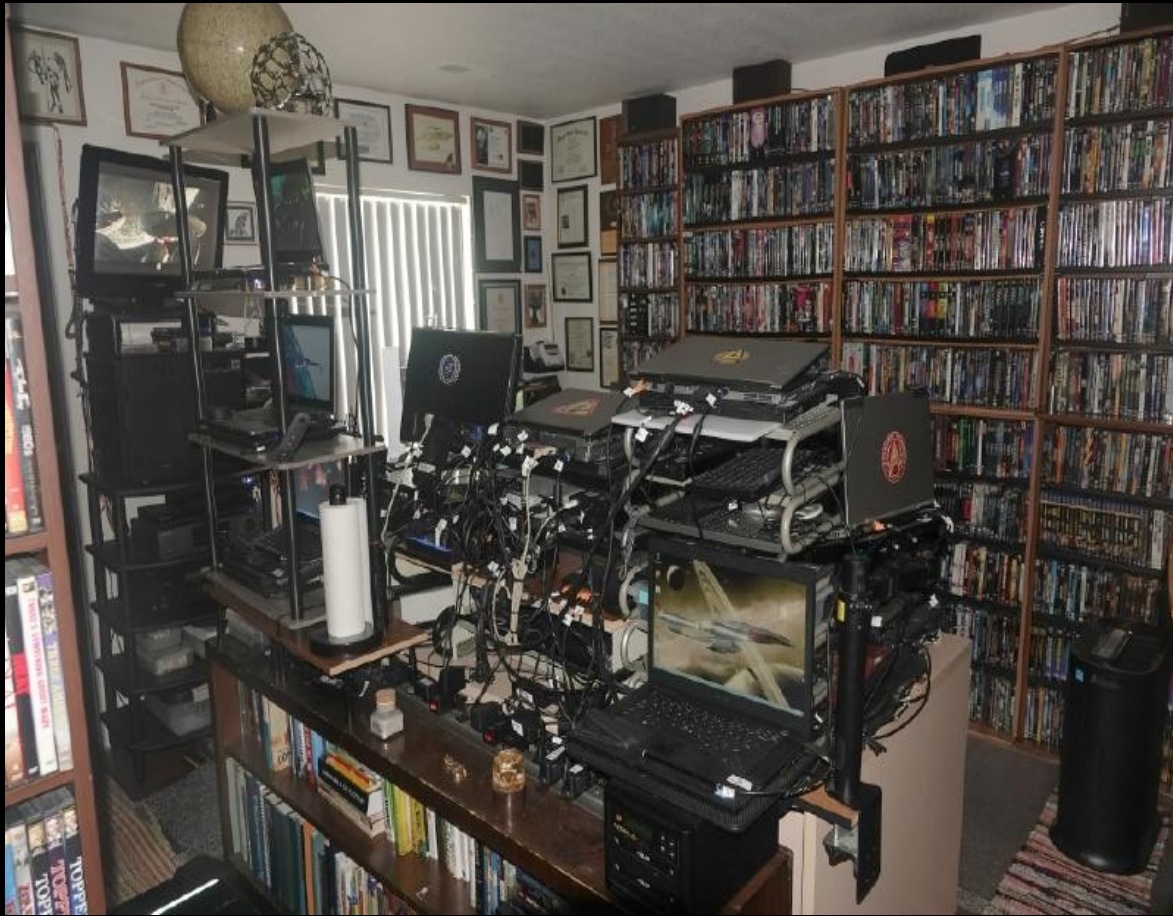


Home Office: Entrance View



**Top 0.20 % of World Contributors to
BOINC Scientific Computing Network
Top umich contributor**

22 Computers

All have max RAM for system
Desktops have multiple hard drives
Operate 24/7/365 for BOINC

All Hard wired (WiFi disabled in BIOS)

Gold-clad cat 8 Ethernet cables

17", 19" and 24" Flat screen monitors

Covered with blue-light shield

2 4-port monitor input switches

3 laptop docking stations

1 Network (in 4 zones)

4 gigabit 8 port switches

22 USB 3 external HDs

Legal size scanner

HD 1080 60 fps webcam

8.5" x 11" Writing Tablet

HP all-in-one printer / fax / scanner

Casio CD label printer

Stand Alone Duplicators:

2 at a time Flash Drives

5 at a time CD's

2 at a time DVD's

Sata HD cloner

3 APC Backup Power Units

4 16 outlet surge protecting power strips

Comcast Broadband Router

WiFi Hot Spot Disabled

Inside Faraday Cage

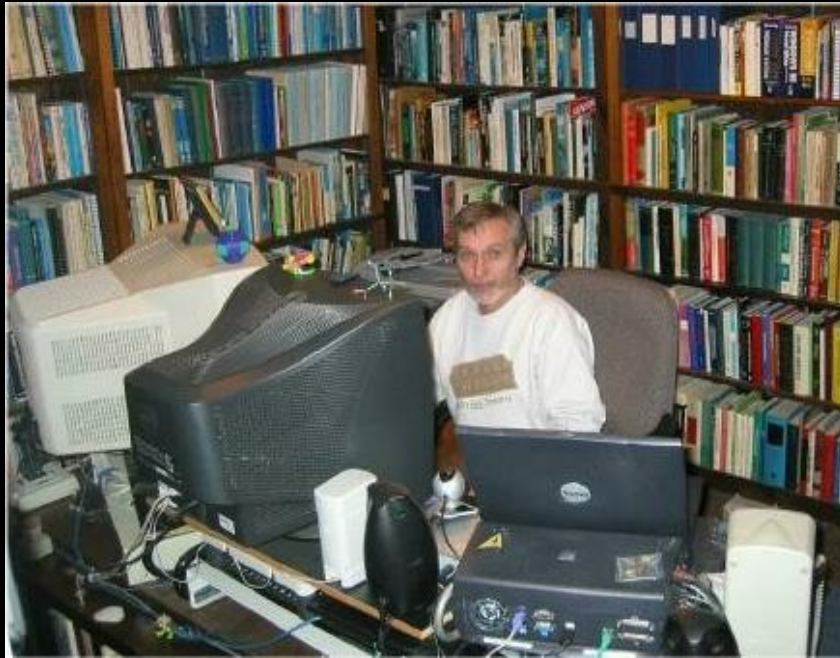
Home Office: My Desk



Home Office: On-line Lecture Workspace



Reality Check: My Home Office in 2001



Two Custom built Towers: Win98 and Red Hat Linux

One docked laptop: Win2000

Current video conferencing requires Win 7 (circa 2010) as a minimum

DSL @ 880 kbs

$454,000,000 / 880,000 \gg \sim 516$ times slower than current internet broadband

$6,000,000 / 880,000 \gg \sim 6.8$ times slower than minimum for HD 1080 webcam

Allegation that current lectures are using technology from year 2000 is without merit